

abbotFox

Imperial House, 61-65 Rose Lane, Norwich

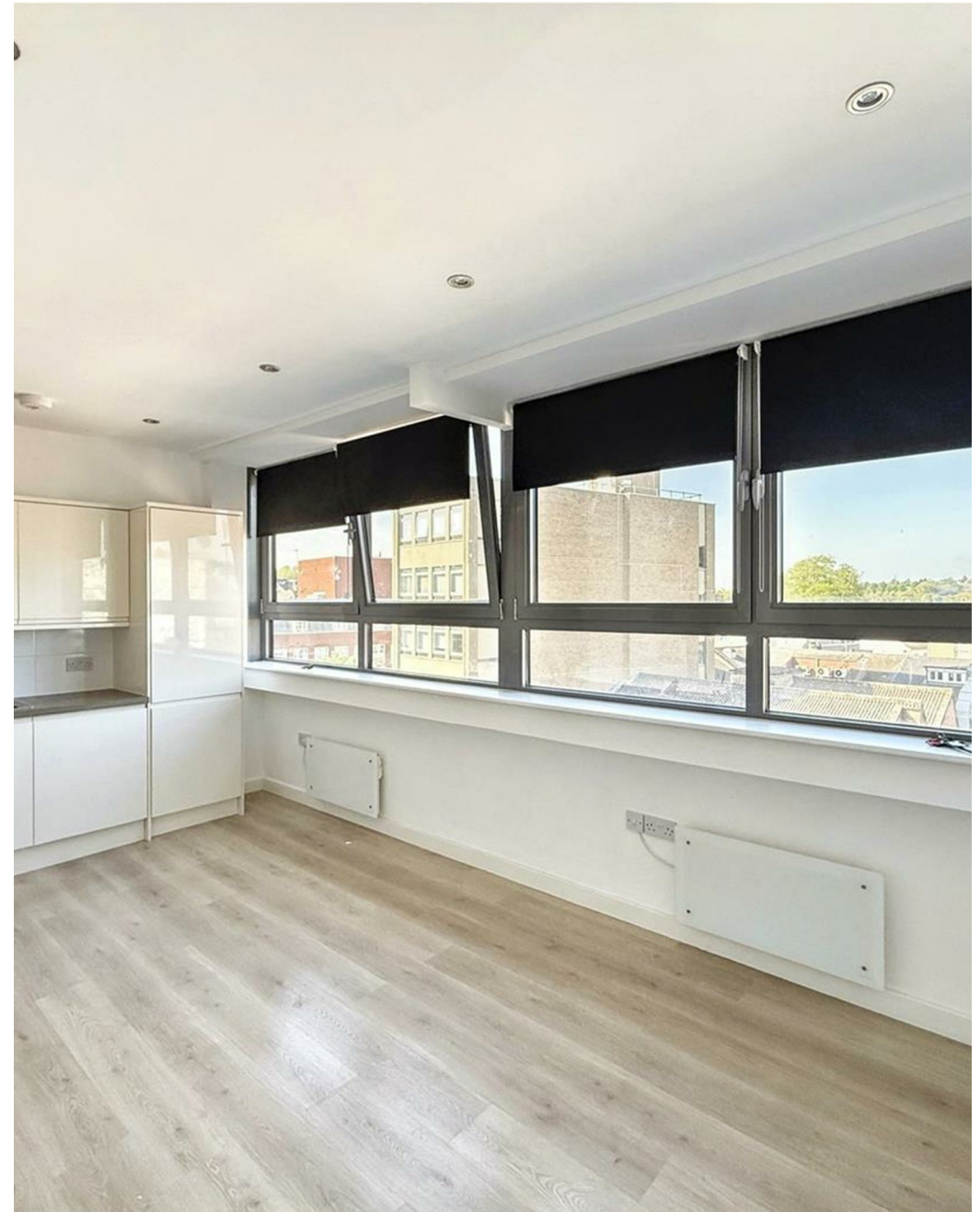
P City centre  
St Stephens  
St Andrews  
Castle Mail  
170

Norwich, NR1  
*£850 PCM*

“

We are a team of genuine individuals who hold a deep passion for both property and marketing. Collectively, we bring over 70 years of experience in the property market of Norfolk and Suffolk. Our affection for both counties runs deep, and we are enthusiastic about sharing our passion with you.

Colin McKenzie | **Branch Partner**







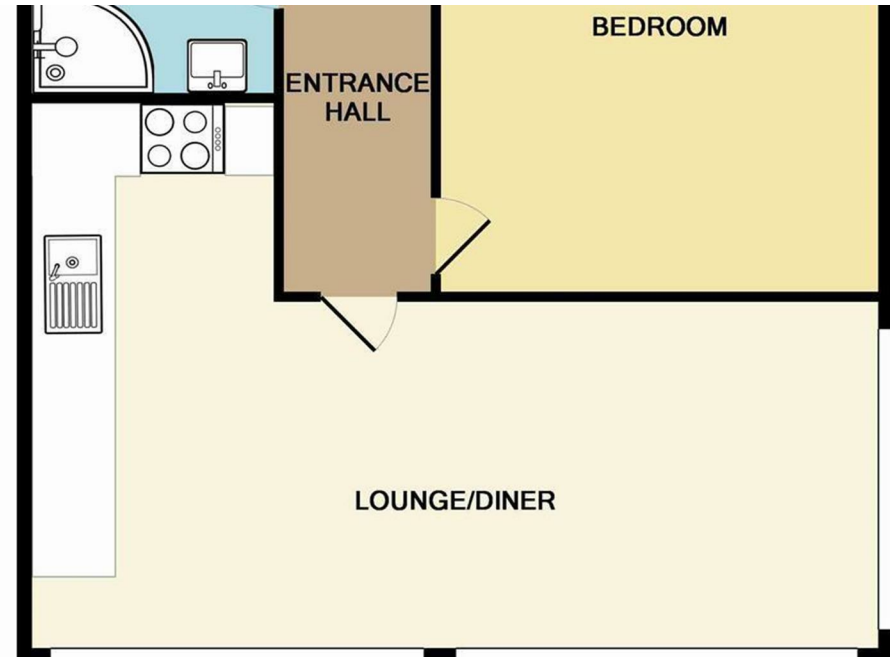
## THE DETAIL \_\_\_\_\_

AbbotFox proudly presents this exceptional one-bedroom apartment, offering contemporary luxury within the sought-after Imperial House development. Designed with both style and comfort in mind, this impressive home combines high-quality finishes with modern functionality, creating the perfect setting for professional living in the heart of the city.

The apartment features a beautifully designed open-plan living area, perfectly blending kitchen, dining, and lounge spaces. The modern kitchen comes fully equipped with premium integrated appliances, sleek cabinetry, and elegant work surfaces, providing everything needed for everyday living and entertaining guests alike.

The double bedroom is bright and spacious, offering a peaceful retreat with ample storage options. The stylish shower room is finished to an excellent standard, complete with contemporary fittings and a clean, minimalist aesthetic that complements the apartment's overall design.

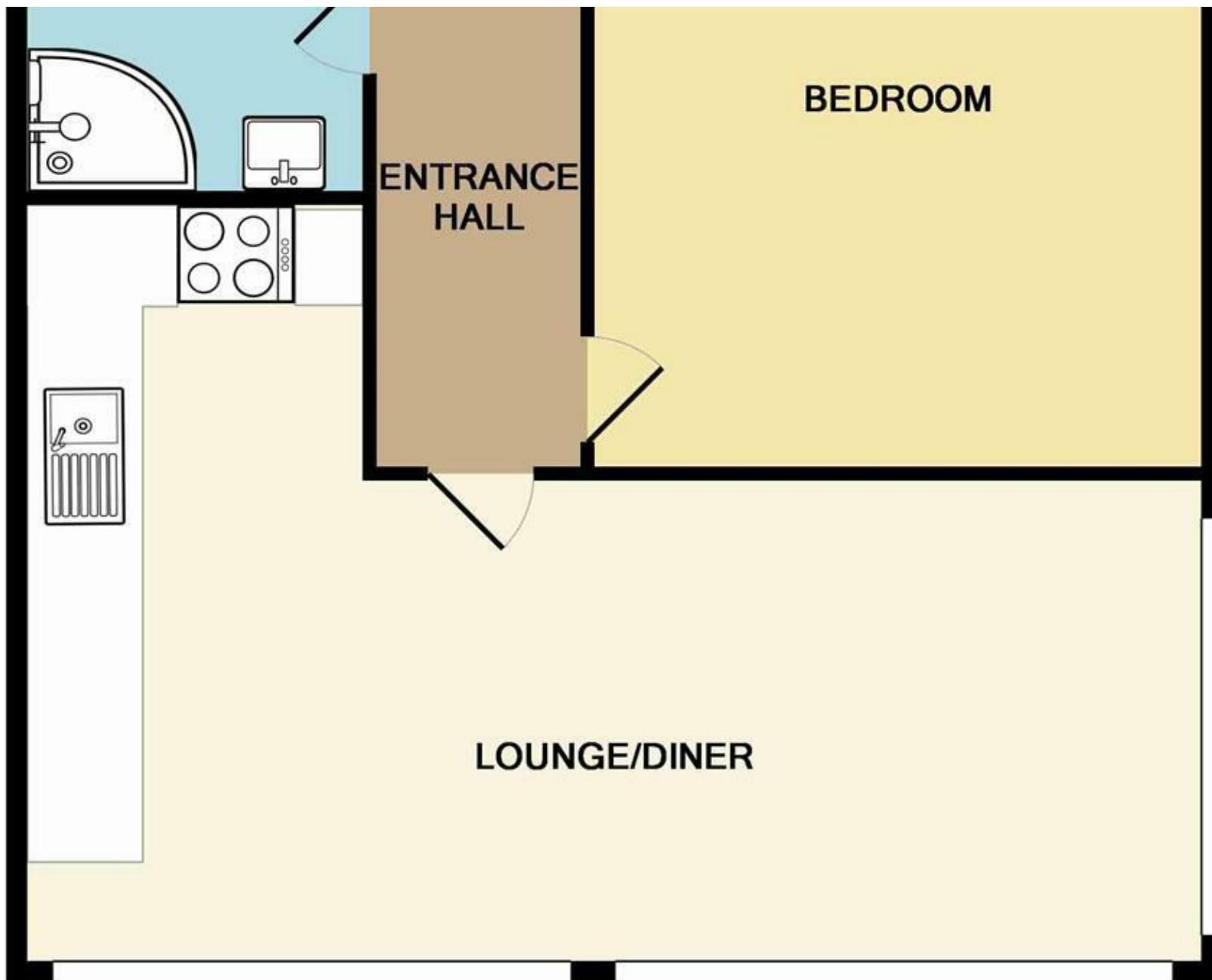
Situated within the exciting Imperial House development, residents benefit from a vibrant urban lifestyle surrounded by local amenities, shops, restaurants, and excellent transport links. This property represents a rare opportunity to experience city living at its finest — where luxury, convenience, and design meet seamlessly.





## THE HIGHLIGHTS \_\_\_\_\_

- Contemporary fixtures and fittings
- Central City location
- Finished to an impeccable standard
- Stylish decor with plenty of natural light
- High levels of interest expected



*Let's talk*

01603 660000

[sales@abbotfox.co.uk](mailto:sales@abbotfox.co.uk)

@abbotfox

EPC RATING -

Disclaimer – In accordance with the Property Misdescriptions Act, the company abbotFox gives notice that all descriptions, references to condition, necessary permissions for use and other details are given in good faith and believed to be correct, but any purchaser should not rely on them as statements of fact, and must satisfy themselves by inspection or other means, as to their accuracy.